

Oral Assessment Tool 1

Our Lady's Children's Hospital, Crumlin

For infants and children in Ward Areas

- Use Assessment tool 1 for the wards
- Use Assessment tool 2 for PICUs
- Use Assessment tool 3 for St Johns and HODU

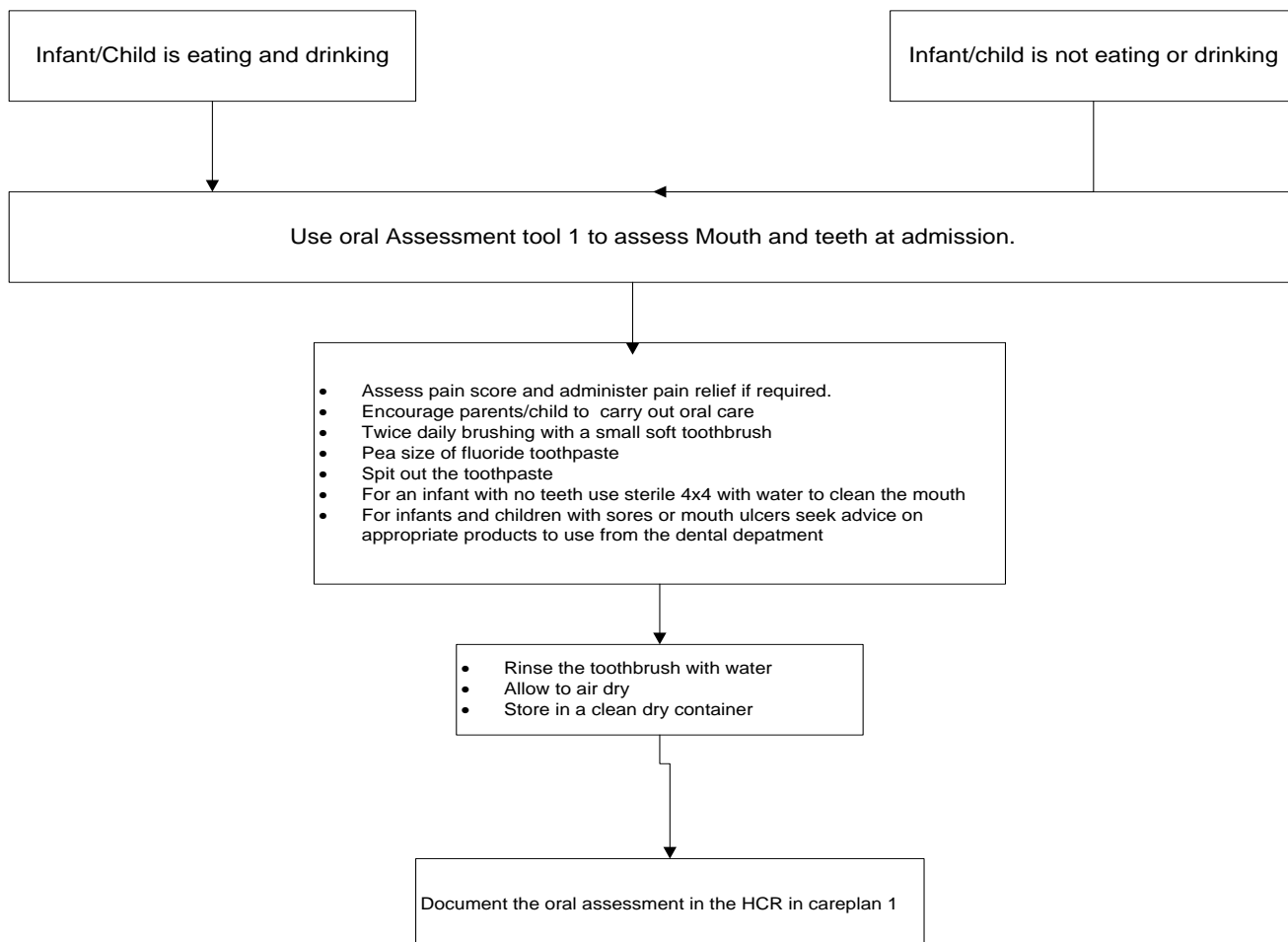
ORAL ASSESSMENT TOOL								
Date								
Time								
<u>Soft tissue</u> <u>Lips</u> 0 = Smooth, pink, moist 1 = Dry or cracked 2 = Ulcerated or Bleeding								
<u>Tongue</u> 0 = Pink, moist, papillae present 1 = Coated or loss of papillae 2 = Blistered or cracked Other. white spots, ulcers <i>Please detail</i>								
<u>Mucous Membrane</u> 0 = Pink and moist 1 = Reddened or coated 2 = Ulcerated +/- bleeding Other. white spots, ulcers <i>Please detail</i>								
<u>Gingiva / Gums</u> 0 = Pink and moist 1 = Oedematous / redness 2 = Spontaneous bleeding Others. ulcers, white spots, <i>Please detail</i>								
<u>Teeth (If no teeth, score 1)</u> 0 = Clean & no debris 1 = Localised plaque or debris 2 = Generalised plaque/ debris								
<u>Dental Pain</u> 0 = No pain 1 = Mild pain Pain tool 2 = Severe pain <i>Please use pain score as per</i> <u>Observation chart</u> (Note location of pain)								
<i>If a score of 2 is given for any field consider medical and/or dental review</i>								
Initials								
NMBI number								

Adapted from Eilers *et al* 1988.

Guidance

1. All patients have an oral assessment with their admission assessment, use this tool to guide daily practice.
2. If obvious oral hygiene needs place the assessment tool in the patient end of bed notes for daily use.
3. Calculate a score per area and detail the score in the section provided.
4. If a score of 2 is given to any area consider referral to the dental department for review
5. Detail the assessment in Careplan 1 and suggest evaluation
6. See overleaf for daily dental hygiene guidance for infants and children

Flowchart for Oral care in OLCHC



References

NHS (2000) *Mouth Care Policy*, Doncaster and Bassetlaw Hospitals, NHS, UK
 OLCHC (2012)
 World Health Organisation (1979) *Handbook for Reporting Results of Cancer Treatment*. 15-22.
 Chen C.F. Wang R. H. Cheng S.N. and Chang Y.C. (2004) *Assessment of Chemotherapy-Induced Oral Complications in Children With Cancer*.
Journal of Pediatric Oncology Nursing **21**, 33-42
 Eilers J. Berger A. and Petersen M. (1988) *Development, testing and application of the oral assessment guide*. *Oncology Nursing Forum* **15**, 325-330.
 Johnson et al 2010,

Prepared by FON 2014